

Pick a Christmas Tree

Use these cute trees with an assortment of Primary Christmas Songs and Tree Trivia!

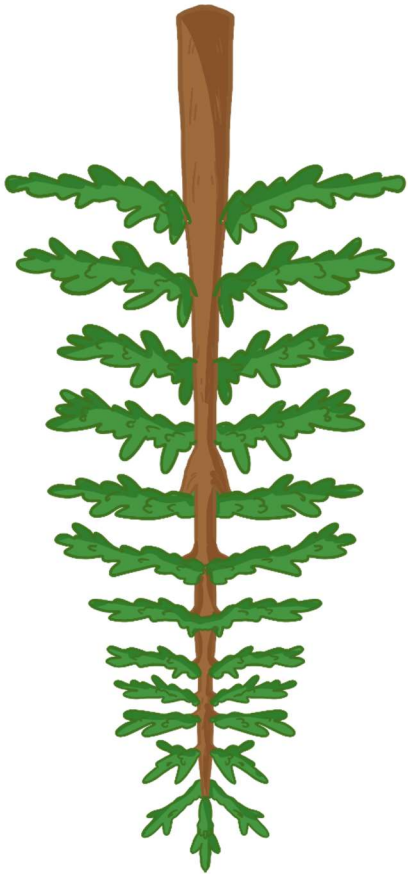
Find the full lesson plan, extension ideas, and song suggestions in the blog post here:

<https://www.primarysinging.com/pick-a-christmas-tree-trivia/>

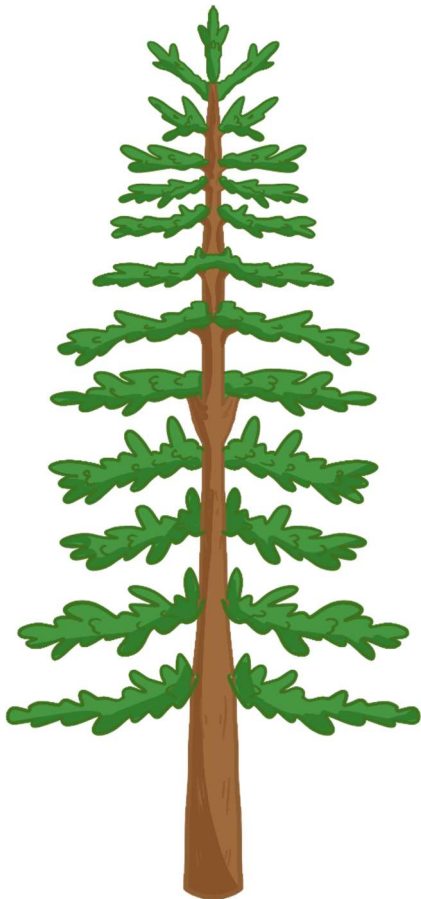
Do not share this file directly.

See our terms of use on the last page.

If you'd like to share this printable, simply share the link to the post!

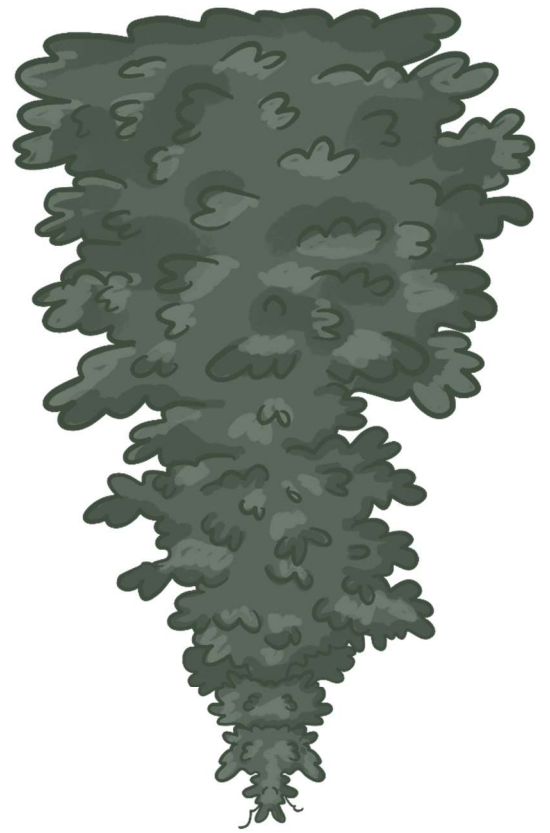


**Manger
Away in a**



**1. How tall is the
tallest living
Christmas tree?**

**Stable
Lowly
Within a
Once**

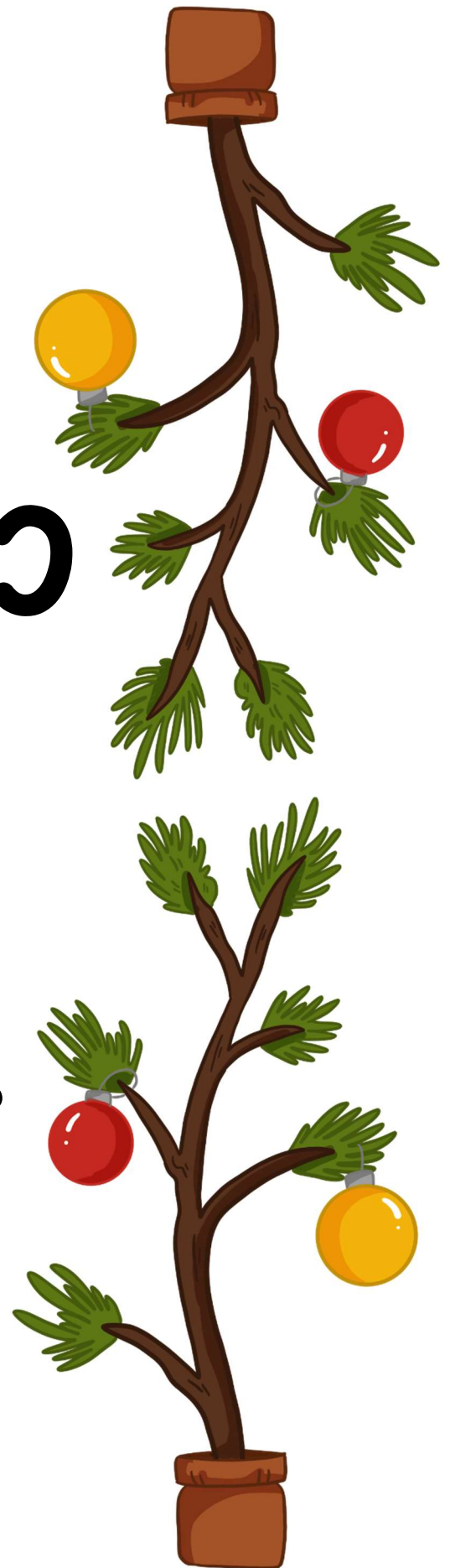


- 2. When were
Christmas trees
first sold in the
United States?**
- a. 1850 b. 1900**
- c. 1950**



Christmas Bells

3. True or False:
Charlie Brown was
hoping to find a
fake tree.



Christmas Trivia Answers:

1. A 122-foot tall Douglas fir
2. Answer A - 1850
3. False! A Charlie Brown Christmas influenced public opinion on Aluminum trees



Permissions & Use Policy

Thank you for downloading this printable. Your download grants license for the personal and church use of the individual purchaser. This license may also extend to other co-teachers, assistants, or others who may help and assist you in teaching this lesson. You may purchase and print and utilize this printable as well as prepare this lesson as an activity for a substitute or for an assistant. You may also share the printed resources with the music leader who follows you for use during the remainder of the current year's lesson plans.

Our digital files may not be further passed on, shared, distributed, or given to any other individuals. In sharing printed resources, the license does not continue to extend to those individuals for use beyond the continuation of use for which it was initially purchased with a limited-use license.

Any additional music leaders, teachers, assistants, or other individuals who would like their own personal copy of the digital files and resources should obtain their own copy with license. Copies of all our resources can be found at www.PrimarySinging.com.

Copyright

This file is protected by copyright. Copying any part of this work, sharing digital copies, distributing by print beyond the use permissions, or any other form of releasing this file is a violation of copyright law. Additionally, it is a violation of copyright law to adapt or modify and share this digital work as your own creation when sourced from another person's copyrighted work. This file may not be sold, reproduced, or distributed.

We do encourage, and appreciate, sharing the link to our original resources and files with those who may be interested. You can additionally share how you used and adapted the files for your own use to inspire others for how they might use these files within the acceptable use policies.

The lyrics used in this flip chart are protected by copyright and are used with permission and may have a royalty fee. Permission was granted for this specific use case and end product and cannot be modified.

The artwork included in this flip chart is commissioned artwork created by Daniela Trejo and is licensed for use for this specific end-product. The art may not be modified, copied, adapted, or used for any other purpose.

Help & Feedback

If you need any help or additional information on the acceptable use and policies of our digital files, you can reach out to us directly from the email address shared on our website www.PrimarySinging.com.

We would love to hear ideas on how to improve and additional ideas for use of our printables! We welcome your feedback and experiences! You can also share your experiences using the hashtag **#PrimarySinging** on your favorite social media channels.

Thank you for your support!